

# Your Binatone ADSL500 USB Modem Setup Guide

Follow our exclusive guide below to get your new modem installed quickly and easily. This guide is based on the Windows operating system. For installation on an Apple Macintosh, please see the manual included with the modem. **Please note that OS9 and below is NOT supported.**

**Important** – If you have any other USB modems installed on your computer these must be uninstalled before continuing.

**Important – Windows XP Users** – Before you begin the installation please ensure that you have updated to Service Pack 1. This can be done by visiting <http://windowsupdate.microsoft.com>. If you do not do this you will experience slow speeds when connected.

- 1 Insert the installation CD before connecting your ADSL modem to your PC's USB port (this CD is included with the modem). The installation will start automatically (if not, find the file and double-click the file 'setup.exe' on the installation CD. Click **"Install Driver"** in the window that appears. When prompted, click **"OK"** to start the installation process.
- 2 The installation process will now start. When the installation is complete, you will be presented with a message saying 'Device driver installation complete'. Click **OK** to continue.
- 3 Next, you can configure the modem. Open Internet Explorer, go to the 'Tools' menu and select 'Internet Options'. Next, you can configure the modem. Open Internet Explorer, go to the 'Tools' menu and select 'Internet Options'. If you are asked if whether you wish to connect to the Internet at this point, select 'Work Offline'.
- 4 In the Internet Options window, select the 'Connections' tab. Confirm that the checkbox labeled 'Dial whenever a network connection is not present' is selected. This will make sure that the modem connects to the Internet when necessary. If this option is not available then no changes are required.
- 5 At the bottom of the 'Connections' tab, click the LAN Settings button and ensure that none of the checkboxes are selected. Once you have done this click OK to continue and close the Internet Options window.

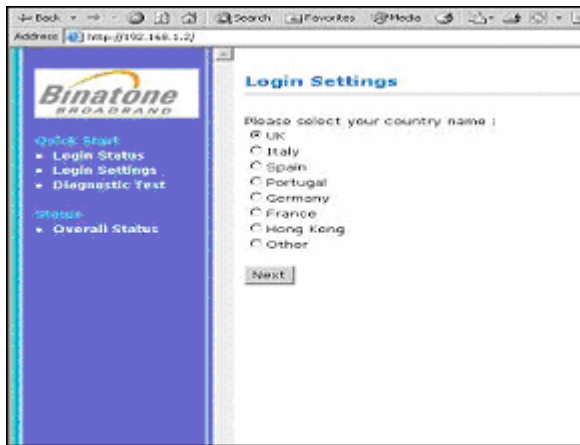


Figure 1

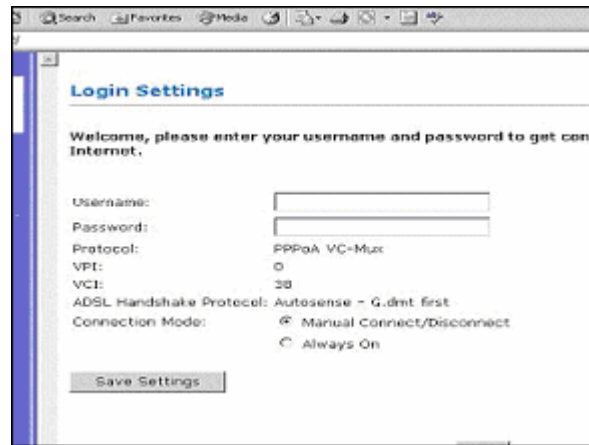


Figure 2

- 6 The installation process will create an icon on your desktop named **Binatone ADSL500 USB Modem Login**. Double-click this icon to continue. If the icon is not created then open Internet Explorer and type <http://192.168.1.2> into the address bar.
- 7 On the first Login Settings screen (Figure 1) select 'UK' from the options available and click **Next**. You will be asked next to confirm your login settings. Confirm that the protocol is 'PPPoA VC-Mux' and click **Next** if this is the case. If the protocol is different close the browser window and go back to Step 6.
- 8 On the next screen (Figure 2) you will be asked to enter your ADSL username and password. Your ADSL username will be sent to you by e-mail when your ADSL account is activated, and is different to the username chosen during the signup process. You can also select to connect automatically (when your PC is booted up) or manually (you connect when you want) - select the option that your prefer. Once done, click **Save Settings** to save the configuration and reboot the modem
- 9 The On the next screen, titled 'Login Status', click **Connect**.

Congratulations, you're now connected to ADSL!

Turn over for your handy troubleshooting guide