

# Your Binatone ADSL 500 Setup Guide for Mac OSX

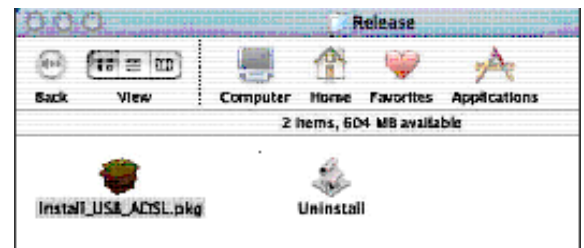
Follow our exclusive guide below to get your new modem installed quickly and easily. This guide applies to **Mac OSX only** – other versions of Mac OS are not supported. Guides for PC are also available from the Support section of our website.

**1** Before connecting your ADSL modem to your Mac, insert the installation CD (included with the modem) into your CD drive. Double click the **Binatone\_V1** CD icon that appears on your desktop. Next, double click on the **Mac** folder and finally double click on the **Mac OSX** folder.

**2** Drag and drop the file **Release.sit** from the CD onto your desktop. Double-click the copy on your desktop and choose **Desktop** when prompted. Click **Choose to extract files onto desktop**.



**3** A folder called **Release** will be added to your desktop. Open this folder and double-click the **Install\_USB\_ADSL.pkg** icon to start the installation. Depending on your settings, you may be asked to enter the administrator password to continue with the installation.



**4** When prompted, select the hard-drive you want to install to and then click **Install**. When the software is successfully installed, close down any other programs then click **Restart** to restart your Mac.

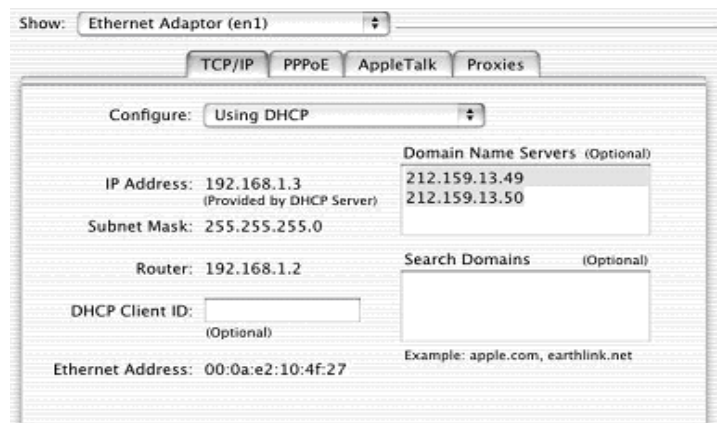


**5** Once your Mac has rebooted, connect the modem to an unused USB port. Open the **Apple Menu**, then **System Preferences** and double-click **Network**. OS X will prompt to say "New Port Detected" - click **OK** to continue.

**6** From the "Show:" menu, select the new Ethernet adaptor. Make sure that "Configure" is set to 'Using DHCP'. Next, enter the following servers into the "Domain Name Servers" box:

- 212.159.13.49
- 212.159.13.50

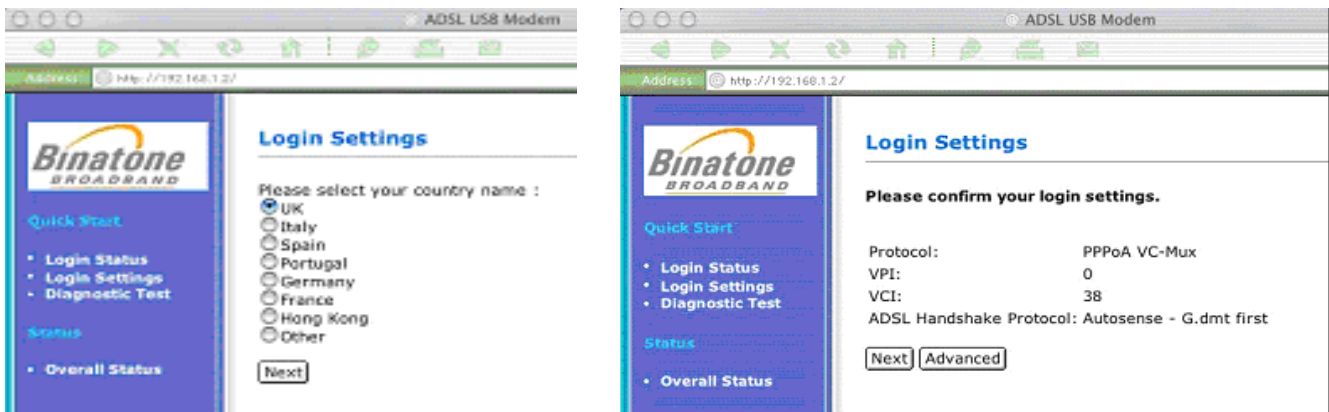
Now click **Apply Now** and the IP address, Subnet Mask and Router address will be filled in automatically. Once finished, close the System Preferences menu.



7 The modem is now installed and must be configured to work with Broadband. Open your web browser and enter the address <http://192.168.1.2> into the address bar. This will display the modem setup page. When prompted to select your country name select 'UK' and then click **Next**. You will then be asked to confirm the modem settings, which should be:

Protocol – PPPoA VC-Mux	VPI – 0
Handshake Protocol – Autosense, G.DMT First	VCI – 38

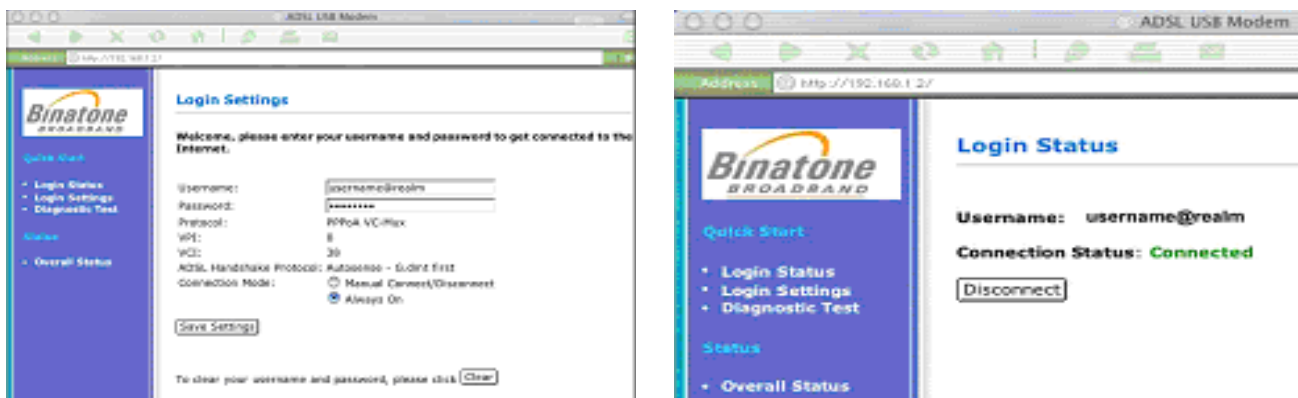
If the settings are correct, then click **Next** to continue. If they are different from those above, then start step 6 again and ensure that UK is selected.



8 Enter your ADSL username and password. Note that your broadband username will be different from the one chosen at signup and will be emailed to you upon account activation.

At this point you will also be able to choose your connection mode:

- **Always On** (recommended) - You will be automatically connected when you turn your Mac on.
- **Manually Connect** - You will need to click the connect button when you want to go online).



9 Once you have completed the Login Settings, click **Save Settings** and the modem will reboot. When the modem has rebooted, click **OK** and then **Connect** (if you chose to connect manually).

Congratulations, you're now connected to Broadband!

If you have any problems, please check the included manual for troubleshooting information, as well as instructions on the advanced features of the modem.