

Your ADSL PCI Modem Setup Guide

Follow our exclusive guide below to get your new modem installed quickly and easily. This guide is based upon the Windows 98 operating system but most versions of Windows will be similar to set-up. For other operating systems, please refer to the manual provided on the included CD.

1 Install your ADSL PCI card

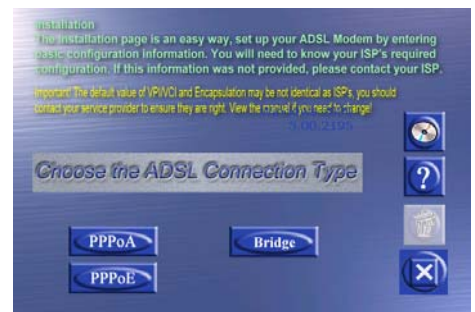
You should follow the manufacturers guide provided with your PC for instructions on how to install your internal modem card. Here are some additional points to remember when installing:

- Place your computer on a flat clean surface and unplug all leads and peripherals.
- Opening your PC's case could invalidate any warranties you may have. Check with your computer supplier to find out if this is the case, as your warranty may require a professional installation.

2 Once your modem card is installed, turn your PC **On**. When Windows loads, the Add New Hardware Wizard will automatically detect the PCI modem. Click Cancel to close this wizard because the CD provided with your modem contains a dedicated Set-up wizard that you should use instead. Insert this CD now.

3 The Setup Wizard should automatically start¹. From the first screen, choose the **Install** option. This will display the screen shown (right). Click the **PPPoA** option and the drivers for the modem will be installed on your computer. Windows may prompt you to reboot your machine. If you are prompted to reboot, close all your programs and do so now.

¹ If the wizard does not automatically start, find and double-click the file **setup.exe** on the included CD.



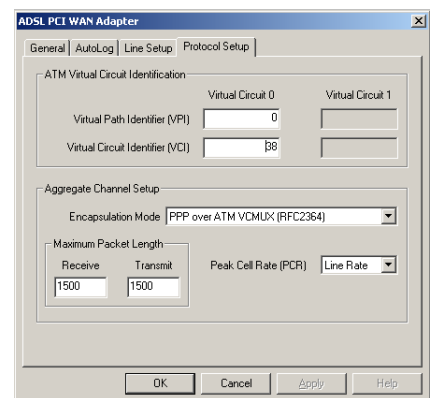
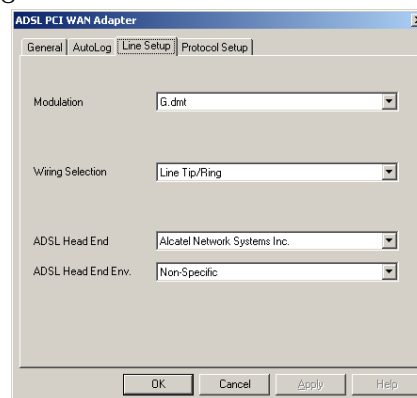
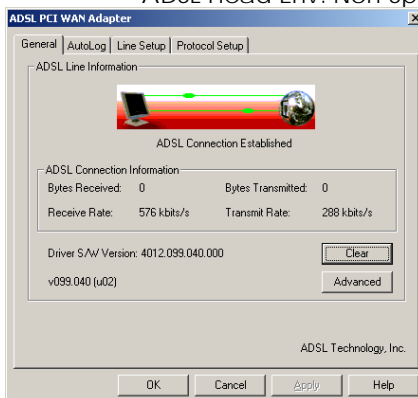
4 The install process will now create three icons on your desktop: **ADSL PCI Modem Wizard**, **ADSL PCI Modem** and **ADSL PCI Control Panel**. Click on the **PCI Control Panel** icon. To view the advanced settings in the window that appears, hold the **Alt** key and press the **C** key. Three additional tabs will appear: **AutoLog**, **Line Setup** and **Protocol Setup**. The settings to enter on each tab are as follows (note that **AutoLog** should be disabled, this is for fault diagnosis only):

Line Setup:

Modulation: G.dmt
Wiring selection: Line Tip/Ring
ADSL Head End: Alcatel Network Systems Inc.
ADSL Head Env: Non-Specific

Protocol setup:

VPI: 0
VCI: 38
Encapsulation mode: PPP over ATM VCMUX



5 Click OK to close the window and save your settings. Your modem card is now set-up and you are ready to connect.

6 Open the ADSL Connection by clicking on the **ADSL PCI Modem**. In the window that appears you should enter your ADSL username. This will be sent to you by e-mail once your ADSL account is activated, and is different to the username chosen during the signup process. Enter your password as normal and click Dial (or Connect). Congratulations, you're now connected to ADSL!

Turn over for your handy troubleshooting guide